

44 ROUTE TO PRAT PRIMER THROUGH THE PALOMERA FOREST PATH

DON'T MISS...

a visit to the Casa de la Vall. Was the seat of the Consell General, the Parliament of Andorra, it is a landmark building because of its historical significance.

DID YOU KNOW?

Andorra la Vella, and more specifically La Margineda, is home to the archaeological dig site of Balma de la Margineda, where rock paintings have been found that show that the first humans already frequented the site around 7,000 years ago.

TOPONYMY

Palomera: Wide mountain pass; long, falling crest interrupted by rounded notches. This is an archaic form of the Catalan colomer, coming from the Latin columbariu, derived from palumba. Birds from the Columbidae family like to rest in these places. Sometimes, the toponym can come from the ashy colour of the neighbouring rocks.

HIKING IN ANDORRA



Trough along the path



Robin (*Erithacus rubecula*)



Scorpion senna (*Coronilla emerus*)



Palomera forest path

Prat Primer is located in the sud-est of Andorra, in the parish of Andorra la Vella.

The La Comella and Forn rivers descend from the slope where this forested and gently rising and falling route starts, along with Prat Primer river, opening a path through a fantastic glacial valley. All these rivers form part of the Gran Valira basin.

The deciduous forests, green and exuberant in summer and reddish and brown in autumn, are one of the most important elements of the landscape along this route. Downy oak trees, drier and less gloomy than large-leaved oaks, cover much of this part of this parish.

The most dominant bush is boxwood (*Buxus sempervirens*), with oval leaves glossy on the front, but it is joined by many other, mostly deciduous species such as the snowy mespilus (*Amelanchier ovalis*), common dogwood (*Comus sanguinea*) and scorpion senna (*Coronilla emerus*).

The most prominent birds frequently found in this area include the robin (*Erithacus rubecula*), blackcap (*Sylvia atricapilla*), blackbird (*Turdus merula*) and blue tit (*Parus caeruleus*), among others.

44

ANDORRA LA VELLA

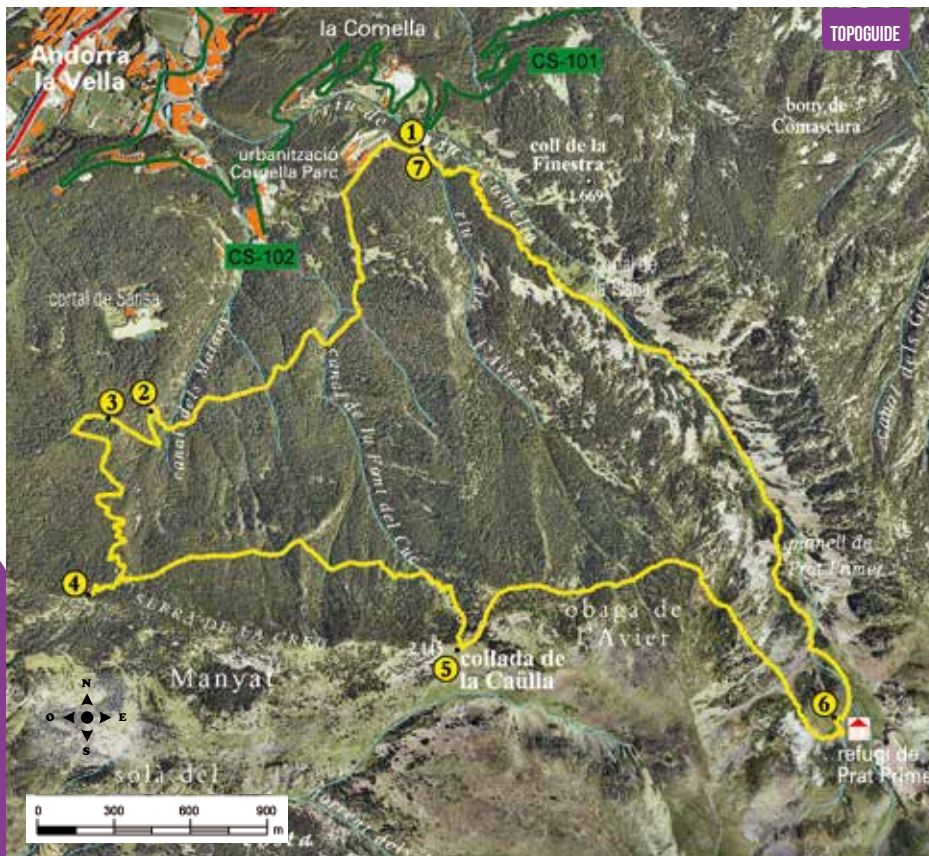
44. ROUTE TO PRAT PRIMER THROUGH THE PALOMERA FOREST PATH

DATA SHEET

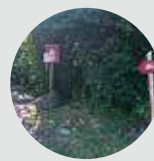
-    
-  4H 10 MIN
-  +900 M
-900 M
-  12.300 M
-  YES
-  APPROXIMATE WALKING TIMES

ROUTE SIGNPOSTING

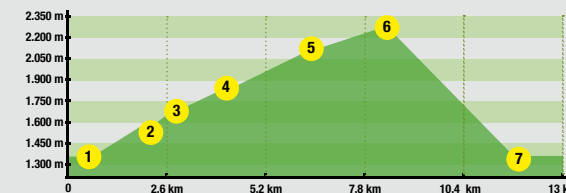
-   
-  WRONG WAY



LOCATION HEIGHT	DISTANCE DROP	TIME	COORDINATES	DESCRIPTION
1 LA COMELLA PARK URBAN AREA 1.335 m	-- (--)	--	N42 29.908 E1 31.823	To reach the starting point, take the La Comella road (CS-101) from Andorra la Vella and continue past the 4 km point. Soon you will see an intersection on the right and a place to park your vehicle.
2 END OF THE FIREBREAK PALOMERA PATH 1.530 m	2.200 m (+195 m)	35'	N42 29.344 E1 31.048	From the car park, continue along the road until reaching a barrier; cross it and climb up a forest track until it comes to an end. Here you will find a pond that is fed by the water from the Astrell water spring.
3 LA PALOMERA THE PATH VIEWPOINT 1.625 m	2.690 m (+95 m)	50'	N42 29.327 E1 30.926	Still climbing, on the right-hand side of the path and down a short descent, is a spectacular viewpoint over the Andorra la Vella valley, which is worth the trouble to visit.



ROUTE PROFILE



LOCATION HEIGHT	DISTANCE DROP	TIME	COORDINATES	DESCRIPTION
4 SERRA DE LA CREU 1.850 m	4.060 m (+225 m)	1h 30'	N42 28.953 E1 30.874	Follow the signs for the Palomera path, heading into a beautiful young forest of Scots pine trees and continuing towards the Maïans path until reaching La Creu mountain, where you will be amazed by the panoramic views over Sant Julià de Lòria valley.
5 COLLADA DE LA CAÜLLA 2.145 m	6.140 m (+295 m)	2h 15'	N42 28.844 E1 31.932	Turning back on yourself a few metres, the route continues along the Maïans path, which leads to the Collada de la Caülla mountain pass.
6 PRAT PRIMER REFUGE 2.235 m	8.550 m (+90 m)	3h	N42 28.708 E1 33.015	This is one of the most beautiful stretches of this route, as the path continues along the edge of Andorra la Vella, providing a splendid panoramic view. Continue along the Avier path and enter into the Prat Primer valley, where you'll soon arrive at the refuge.
7 LA COMELLA PARK URBAN AREA 1.335 m	12.300 m (-900 m)	4h 10'	N42 29.908 E1 31.823	A long descent through the bottom of the valley leads directly to the point of departure and arrival. In the last stretch, you'll pass by Cortal de la Plana; afterward the path descends into a Scots pine forest. There are several intersections here, and you should keep to the right-hand trail at every fork.

